

# Baseball NSW



## Little League NSW State Championship Rules & Procedures 2008

Revision 2.0 - FINAL

Glen Willott CEO BNSW

2008

# Little League NSW State Championship Rules & Procedures 2008

---

## Change Control

Modifications to the document this issue ....

- (a) 6.10(f) now reads 30 pitches, not 60
- (b) 6.8(b) Tournament max for LL is now 70, not 75
- (c) Tournament Schedule 3 changed
- (d) Result sheet amended – Schedule 4
- (e) 6.8(e) changed to read “No Pitcher is allowed to catch in the same day except as provided at 6.11(e)”. Allows a catcher to pitch one Minor the same day.
- (f) Added 6.11 (e) A catcher is allowed to pitch on the same day but is restricted to a Minor Assignment
- (g) 6.24 added:- protocol for dealing with games tied after 6 innings
- (h) New 6.12 added – changes paragraph numbering from here on. Allows a continuous batting line-up of more than 9 players.
- (i) 6.17(i) {previously 6.16(i)} modified to cope with a continuous line-up.
- (j) Assignment Table updated to reflect a pitcher moving to 1<sup>st</sup> or 2<sup>nd</sup> base after completing a minor/minor or substantial assignment, not having pitched the previous day
- (k) 6.13 bench/dugout, amended to include coaches holding level 1 accreditation
- (l) 6.16 e ii 5 Pitches equal 1 defensive not 6 as previously indicated

# Little League NSW State Championship Rules & Procedures 2008

---

## 1. Objective:

To publish for general use a single booklet detailing the Tournament Rules that will govern the operations and procedures for the Little League State Championships in New South Wales, as follows:-

- A. Summer Championship 21-24 March (Easter) 2008, Samuel Marsden Reserve Orchard Hills, and
- B. Winter Champion 10-11 May 2008, Stevenson Park, Industrial Drive Mayfield West

## 2. Reason for Stated Objective:

A. To consolidate various separate references such as:

- a) Little League Official Regulations and Playing Rules 2008 (ORPR2008) – removing reference to divisions not applicable within Australia.
- b) Little League 2008 Operating Manual
- c) Information contained at [www.LittleLeague.org](http://www.LittleLeague.org)
- d) ABF National Little League Championship documentation, namely
  - 1. Section 1 Procedures
  - 2. Section 2 Rules
  - 3. Section 3 Policy and Practice, and
  - 4. Section 4 Appendices

B. To include specific requirements for the Laws operating in NSW, and

C. To enunciate the agreed principles and understanding derived from

- a) The Operations Committee of Baseball NSW, and
- b) Discussion Forum on Little League Championships conducted 4<sup>th</sup> March 2008

## 3. Acknowledgements

In restating any content from the abovementioned references we acknowledge that ownership of any intellectual property rests with the Little League Organisation and any reproduction in whole or in part is solely for use by Baseball NSW and its members for the ease of better understanding the mechanics, in Australian psyche, of the Little League Playing rules and procedures.

# Little League NSW State Championship Rules & Procedures 2008

---

## 4. 2008 Tournament Rules and Guidelines for New South Wales Little League Baseball Championships - *Points of Emphasis in Bold Italic.*

### 4.1. Preamble

Tournament play started in Little League in 1947. Conduct of tournament play by District Administrators began in 1956 following the first Little League International Congress. Today, responsibility for scheduling and supervising all district tournament games comes under jurisdiction of the District Administrator.

The Tournaments of Little League have grown year by year until today they have become the outstanding, in fact, the only exposure that the majority of the public sees. In many cases, they are the criterion by which Little League is judged. Proper conduct at tournament time imposes a large responsibility upon all concerned. Good judgment and exemplary disciplines are demanded if Little League tournaments of the future are to remain worthwhile in the public esteem.

The Little League Tournaments are authorised by the Board of Directors. Leagues which exercise the option to participate in Tournament Play must pledge they will do so with full knowledge of the rules and in agreement that the rules will be upheld.

### 4.2. Rules

Except where noted in these Tournament Rules and Guidelines, the Little League Baseball Official Regulations and Playing Rules (ORPR) will be used in the conduct of Little League Baseball Tournament. ***Cross Reference to the 2008 little League Official Regulations and Playing Rules (ORPR) is noted for ease of reference.***

#### **9-10 Year Old Division & 10-11 Year Old Division**

The objective of the 9-10 Year Old Division & 10-11 Year Old Division Tournament is to provide nine and ten year old players, and ten and eleven year old players, the opportunity to participate in a baseball tournament at the District, Sectional, and State levels at the conclusion of the regular season.

***In New South Wales, Australia we do not presently conduct 9-10 or 10-11 Year Old Divisional Tournament Play thus 10 Years Olds are permitted to compete in the Little League Division (11-12 Year Olds) provided suitably accredited team coaches are satisfied with the players' ability to participate safely.***

# Little League NSW State Championship Rules & Procedures 2008

## 4.3. Responsibility and Chain of Command (T1)

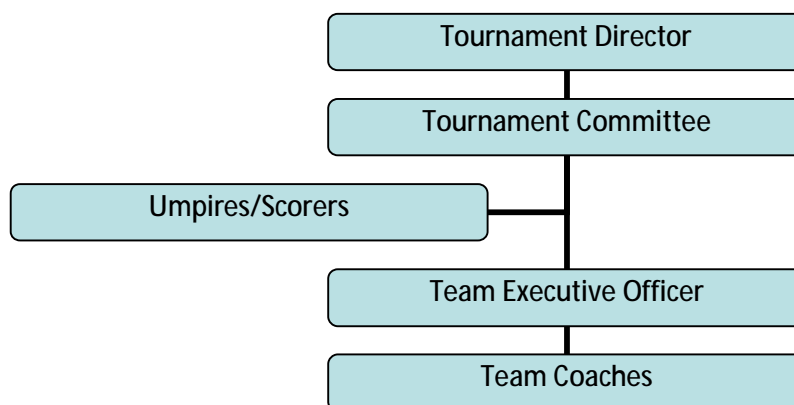
In referring to pages T1 and T2 of the ORPR 2008, it states that:

“Once the tournament season starts, authority is vested solely in the Tournament Committee at Williamsport. There will be no waivers or resorting to local rules or other variation unless granted explicitly from Williamsport. To administer the tournament properly and scale down thousands of teams to two finalists in the limited time afforded by the tournament season is an undertaking requiring considerable disciplines. Once the tournament starts, it must proceed without interruption.”

This should be read as relating specifically to Tournament Play in the USA, leading up to the World Series.

Emphasis is on adhering to a strict schedule in order to determine regional champions in time for the World Series to proceed with delay.

For the inaugural year of Tournament Play in NSW the Chain of Command shall be according to the following diagram:



The Tournament Director shall be CEO of Baseball NSW or such other delegated authority as may be appointed from time to time. The Tournament Committee shall comprise:-

- District Administrator (Maureen Bertram)
- Tournament Director (CEO, or delegated authority)
- BNSW Director of Coaching/Country League Technical Committee (Barry Holland/Shane Barclay)
- Umpire Coordinator (Fred Adam/tba.....)
- Rules Coordinator Junior/Country League Standing Committee (Graham Smith/tba.....)
- Chairperson JLSC/CLSC (Terry Johnson/Gordon Eacott)
- Representative Host Club (Leigh Carroll/Kim Hook)
- Other representatives as appointed (Easter - Eddie Bray/ Winter - Chris Halpin )

# Little League NSW State Championship Rules & Procedures 2008

---

In relation to any protest or dispute, a minimum of three representatives from the abovementioned Committee shall adjudicate and provide its recommendation to the Tournament Director whose decision shall be final.

In arriving at any decision it would be reasonable to expect input from any/all Umpire-in-Chief, and team official(s).

## **4.4. Selection of Tournament Teams (Recommended Method)(T2)**

Little League would gain immeasurably in esteem of the public if all tournament teams were selected by the players themselves.

Tournament team candidates should be selected upon their playing ability and eligibility. The roster should include sufficient pitching strength to meet tournament schedules.

It is recommended by Little League Organisation that the following groups should each select its tournament team; however In NSW, the responsibility of Tournament Team selection rests with the Administration of each Chartered League.

- Group 1 - Players
- Group 2 - League Officers
- Group 3 - Team Managers
- Group 4 - Team Coaches
- Group 5 - Volunteer Umpires

## **4.5. Tournament Organisation (T3)**

Each chartered league shall be eligible to enter a team. Alternates are not authorised.

Tournament teams and Eligibility Affidavit shall consist of, and must be limited to, a maximum of fourteen (14) players, one (1) manager and a maximum of two (2) Assistant Coaches. For NSW State Championships, the Team Manager and Assistant Coach(s) should have a current L1 NCAS Accreditation, but in any event must hold a minimum L0 certificate. Level 1 Accreditation will be required when advancing to National Championships.

## **4.6. Managers & Coaches (T3)**

The president of the League, the District Administrator or District Staff shall not serve as manager or coach.

The manager and coach (s) shall be regular season team managers and/or coaches from the Little League Baseball (Majors) Division.

# Little League NSW State Championship Rules & Procedures 2008

---

## 4.7. Managers/Coaches in the Dugout (T4)

If a tournament team has thirteen (13) or more eligible players in uniform at a game, then the maximum of three (3) adults who are named on the affidavit (or authorised temporary replacements as noted on the affidavit) will be permitted to act as manager/coaches for that game. However, if a tournament team has twelve (12) or fewer eligible players in uniform at a game, then a maximum of two (2) adults must be named at the start of the game as manager and coach. The two named adults must be listed on the affidavit, or must be authorised temporary replacements as noted on the affidavit. If there is a third adult listed on the affidavit, that adult is not permitted to be in the dugout or on the field during that game.

## 4.8. Umpires (T4)

Each Association shall provide at least one umpire for the duration of the tournament schedule. The penalty for failing to provide an umpire as described in schedule 1.

The Umpire Coordinator appointed by New South Wales Baseball Umpires Association shall have full responsibility for providing the roster of volunteer Little League umpires for tournament play. Umpires from leagues involved in the game should not be assigned. The District Administrator shall not umpire.

There should be at least two umpires in each game. More are recommended when available.

## 4.9. Tournament Eligibility Affidavit (T4)

It shall be the League President's responsibility to review and certify the birth records (league age) and residence (as defined by Little League Baseball, Incorporated) of all players. When the league finally decides on the makeup of the team, names must be entered on the league's Eligibility Affidavit (attached as schedule 2) and presented to the District Administrator, who in turn certifies the eligibility affidavit. For the team advancing to the Australian National Titles, the tournament team will be required to have in its possession:

1. the tournament affidavit;
2. copies (originals not required) of the records used to verify date of birth for all players on the affidavit;
3. a map showing the actual boundaries of the league, with locations noted for the residences of the parent or legal guardian (court appointed) of every participant named on the affidavit.
4. three or more documents to determine residency of the parent(s) or guardian for each player named on the tournament affidavit, and
5. Waivers (i.e. II(d), IV(h), Charter Committee, etc...)

***IMPORTANT: Alternates are not authorised. They shall not accompany the team and shall not be listed on the Eligibility Affidavit.***

# Little League NSW State Championship Rules & Procedures 2008

---

Eligibility Affidavit must be certified by the District Administrator or his or her designated appointee and presented by the team manager to the Tournament Director before every game. NOTE: The Eligibility Affidavit becomes official once the team plays its first tournament game.

## 4.10. Participation In Other Programs (T4)

A player may participate in other youth baseball programs prior to the first scheduled game involving that player's team. Once play begins for a tournament team, players named on that team's tournament affidavit may not participate in any other **competing** youth baseball program until that team is eliminated from tournament play. After tournament play has begun, players added to a team's affidavit may not have participated in another Little League baseball program since their team's first scheduled tournament game.

## 4.11. Release of Names (T5)

**N/A Australia**

## 4.12. League Eligibility (T5)

In order for a Little League program to be eligible to enter a team or teams into the International the following must be accomplished no later than June 1, 2008:

1. The league must be chartered in the division(s) for which they wish to enter a tournament team(s). (Examples: Chartered in Little League Majors to enter a Major Division team (11-12 year old); chartered in Senior League to enter a Senior Division team, etc.);
2. All required waivers submitted and approved prior to cut-off date established in Regulation IV (j). (Examples: Regulation II (d), Regulation IV (h), player out of boundaries, etc.);
3. All regular season team rosters must be submitted to Little League Baseball in accordance with requirements outlined in Regulation IV (g);
4. Fees incurred by the league must be paid in full by June 1, 2008.

Failure to meet any of the listed requirements could result in a team or teams being declared ineligible by the Tournament Committee at Little League Baseball.

# Little League NSW State Championship Rules & Procedures 2008

---

## 4.13. Player Eligibility (T5)

In the United States, Little League Tournament Play is categorised by several divisions, namely

- 9-10 Year Old Division
- 10-11 Year Old Division
- Little League Division (11-12 Year Olds, as at 30<sup>th</sup> April in the Tournament Year)

For the New South Wales State Championships and the Australian National Titles, only the Little League Division for 11-12 year olds will be conducted. In recognising many NSW Charters play a regular season only for a single age category, player eligibility for Tournament Play has been broadened to include 10 Year Olds if deemed suitable by league administrators, provided they participated as an eligible player in one-half the regular season games as of June 15 on a Little League Baseball (Majors Division) team

The Eligible Age Range for 2008 is those players with DOB: 1<sup>st</sup> May 1995 ~ 30<sup>th</sup> April 1998

- Youngest (30<sup>th</sup> April 1998) will turn 10 Years on the last qualifying age cut-off day, and
- Oldest (1<sup>st</sup> May 1995) will be 1 day short of 13 Years

League Charters may apply to the District Administrator for waivers to include younger players if considered warranted.

## 4.14. Tournament Requirement for Non-Citizens (T7)

A participant who is not a citizen of the country in which he/she wishes to play, but meets residency requirements as defined by Little League, may participate in that country if:

1. his/her visa allows that participant to remain in that country for a period of at least one year
2. the prevailing laws allow that participant to remain in that country for at least one year, or;
3. The participant has an established bona fide residence in that country for at least two years prior to the start of the regular season.

Exceptions can only be made by action of the Charter Committee in Williamsport.

# Little League NSW State Championship Rules & Procedures 2008

---

## 4.15. Insurance (T7)

Little League State and National Championships are sanctioned events covered by the National Insurance Policy of the ABF with respect to Capital Loss and Public Liability. NSW Players also are covered by a separate Player Accident Insurance Policy. Details can be found at:

- <http://www.baseball.com.au/site/baseball/abf/downloads/policydocuments/ABFInsuranceHandbook07~08SummaryofCover.pdf>
- [http://www.nsw.baseball.com.au/default.asp?MenuID=Administration/20304/0,BNSW\\_Player\\_Insurance/20301/0/](http://www.nsw.baseball.com.au/default.asp?MenuID=Administration/20304/0,BNSW_Player_Insurance/20301/0/)

## 4.16. Replacement of Player, Manager or Coach (T7)

Any player, manager or coach listed on the Eligibility Affidavit who is unable to participate because of injury, illness, vacation or other justifiable reason may be replaced by another eligible person. If a player, manager or coach is replaced, that person may not be returned to the Tournament Affidavit. Permanent replacements must be from the league's regular season teams and shall be recorded and approved by the District Administrator or Tournament Director in the space provided on the Eligibility Affidavit.

**Exception:** If a manager or coach is unable to attend a game for a justifiable reason, a Tournament Director could approve a temporary replacement. Temporary replacement of a manager or coach need not be entered on the Eligibility Affidavit.

## 4.17. Playing Equipment (T8)

The dimensions and other specifications of all playing equipment used must normally conform to those set forth in the Official Little League Playing Rules. It is recognised that such may not be readily available within from the Australian retail market and therefore the following exceptions may apply as noted below:

- Every member of the team must wear a conventional uniform which includes shirt, pants, stockings and cap. This may be a regular season uniform.
- Each team must provide at least six (6) approved safety helmets with warning labels. The batter, all base runners, the on-deck batter, and player base coaches must wear approved helmets.
- All male players must wear athletic cup.
- Female players are encouraged to wear a hockey style genital protector
- Catchers must wear a mask with approved catchers helmet (skull cap type not acceptable) and ~~"dangling" type throat guard~~ during practice, infield/outfield, pitcher warm-up and games. All catchers must wear approved chest protector and shin guards.
- Shoes with metal cleats or spikes shall not be worn by players, managers, coaches or umpires.

# Little League NSW State Championship Rules & Procedures 2008

---

## 4.18. Schedules (T8)

Each District Administrator must finalise tournament schedules prior to the start of the tournament or June 15 (whichever is earliest). Schedules must utilise Little League Baseball approved single elimination brackets, double elimination brackets, or pool play format.

All other tournament formats must be approved by the Tournament Committee.

The schedule for Baseball NSW Summer Play-Offs is attached as Schedule 3.

### NOTE:

Inclement weather may be justification to revert to single elimination in order to complete a tournament on schedule.

## 4.19. Tournament Team Practice (T8)

N/A Australia

## 4.20. Selection of Fields

All games shall be played upon Little League fields approved by the Tournament Director.

Fields must be enclosed with an outfield fence. The distance to the outfield fence should be 200 feet from home plate and may be portable in nature or identified by road safety cones as a minimum standard.

Conventional dirt mounds are permitted for tournament play (artificial mounds not permitted). Should a mound not be afforded, pitching from the flat pitchers rubber will proceed.

The Tournament Director or assistant shall judge fitness of the playing field before the game starts.

## 4.21. Games Under Lights (T9)

Games under lights may be scheduled at all levels of tournament play. The District Administrator having jurisdiction must determine that lighting installations meet minimum standards approved by Little League Headquarters.

## 4.22. Curfew (T9)

No inning shall start after 11:00 p.m. NOTE: An inning starts the moment the third out is made completing the previous inning.

## **4.23. Starting Time of Games (T9)**

A game shall not be started unless the Tournament Director or assistant judges there are adequate time to complete the game before darkness or curfew.

## **4.24. Admission Charge (T9)**

There shall be no charge for admission to the Little League Tournament.

# Little League NSW State Championship Rules & Procedures 2008

---

## 5. CONDITIONS OF TOURNAMENT PLAY

### 5.1. Protests

This rule replaces Rule 4.19.

No protest shall be considered on a decision involving an umpire's judgment.

The Umpire-in-Chief shall determine if any Equipment is unsuitable and must be removed from the game.

Protest shall be considered only when based on:

1. The violation or interpretation of a playing rule;
2. The use of an ineligible pitcher; or
3. The use of an ineligible player.

If an ineligible pitcher delivers one or more pitches to a batter, that team will be required to forfeit the game in question.

When a manager claims that a decision is in violation of the playing rules, the following steps must be taken:

1. A formal (verbal) protest must be made to the umpire-in-chief at once by the manager or coach.
2. The umpire-in-chief must immediately call a conference of all umpires working the game.
3. If the problem cannot be resolved to the satisfaction of the managers, the umpire-in-chief shall be required to consult with the Tournament Director, or District Administrator which decision shall be final.

**NOTE 1**           Protests Involving Playing Rules Not Resolved Before The Next Pitch Or Play Shall Not Be Considered

**NOTE 2**           Protests Because Of A Team's Failure To Meet The Mandatory Play Requirements (See Tournament Rule 9) Must Be Made Before The Umpire(S) Leaves The Playing Field.

Ineligibility under this rule applies to league age, residence (as defined in the Tournament Team Eligibility Affidavit), participation in other programs, and participation as an eligible player for one-half of the regular season in the proper division.

# Little League NSW State Championship Rules & Procedures 2008

---

1. If the facts establishing or verifying the ineligibility of a player are known to the complainant PRIOR TO the game, the following steps must be taken:
  - (a) The complainant shall present the matter to the Tournament Director and/or District Administrator.
  - (b) The matter SHALL be resolved with the Tournament Committee BEFORE the first pitch of the game. The decision of the Tournament Committee shall be final and binding.
  
2. If the facts establishing or verifying the ineligibility of a player become known DURING a game, and the ineligible player participates in the game, that team shall forfeit the game in question, subject to the following conditions:
  - (a) A protest may be lodged by the manager or coach with the umpire-in-chief, who shall consult with the Tournament Director or District Administrator.
  - (b) The Tournament Director or District Administrator must contact the Tournament Committee for a decision. The decision of the Tournament Committee shall be final and binding.
  
3. If the facts establishing or verifying the ineligibility of a player become known AFTER a game, and the ineligible player participated in the game, that team shall forfeit the game in question, subject to the following conditions:
  - (a) A protest may be lodged by the manager or coach with the Tournament Director or District Administrator. Such protest must be made before either team affected by the protest begins another game.
  - (b) The Tournament Director or District Administrator must contact the Tournament Committee for a decision. The decision of the Tournament Committee shall be final and binding.

**NOTE 1:** Disqualification of a team or player(s) and/or forfeiture of a game must be the decision of the Tournament Committee and such decisions will be made prior to the continuation of the affected team(s) or player(s) in further tournament play.

**NOTE 2:** All officials, including all managers, coaches, scorekeepers, umpires, Tournament Directors, District Administrators, etc., should make every effort to prevent a situation that may result in the forfeiture of a game or suspension of tournament privileges. However, failure by any party to prevent such situations shall not affect the validity of a protest.

## **5.2. Play Must Advance**

A team shall not advance from one level of Tournament to a higher level of tournament play without first having competed against and defeated a scheduled opponent at the tournament level from which it is seeking to advance. Any team advancing without play must do so with the approval of the District Administrator.

# Little League NSW State Championship Rules & Procedures 2008

---

## 6. TOURNAMENT PLAYING RULES

The Official Little League Baseball Playing Rules shall govern tournament play except as noted below:

### 6.1. BASEBALLS:

Baseballs shall be regular size leather type from the list of Baseball NSW approved baseballs. Baseball NSW shall provide two new balls for each Tournament Game. Balls shall be returned to the Umpire-in Chief at the conclusion of each game.

### 6.2. ORDER OF BENCHES

The team listed first on the draw shall occupy 1st base dugout.

### 6.3. FIELDS

All fields are considered neutral. The home team shall be determined by the toss of a coin, the winner having the choice.

30 minutes prior to the commencement of the game the Umpire/s will hold a plate meeting. The manager / EO and team captain shall attend the plate meeting. The umpire will toss a coin and the winning team captain will choose to field or bat.

The Manager / EO will present 3 copies of their starting line-up to the umpire. (1 for the scorers, 1 for the Umpire and 1 for the opposing team).

### 6.4. LITTLE LEAGUE OATH

For individual games, before the first pitch is thrown, both Captains will meet at the Home Plate and recite the player oath.

I WILL PLAY FAIR  
AND STRIVE TO WIN  
BUT WIN OR LOSE  
I WILL ALWAYS  
DO MY BEST

Alternatively, at State Championships the oath may be recited once, at the commencement of the tournament, either by a selected player or all competitors collectively.

### 6.5. PLAYING RULES

A copy of the Official Little League Baseball Regulations and Playing Rules and the Tournament Rules and Guidelines must be available at each tournament site and at the time the game is to be played. This is the responsibility of the Tournament Director. Written ground rules established by the Tournament Director or assistant must be reviewed with both managers and umpire-in-chief at least ten (10) minutes before the start of the game.

## 6.6. SUMMARY POINTS OF REFERENCE

***Provided as a quick reference guide only and not intended to replace the OLLBRPR***

- a. Game duration is 6 innings, no time limit
- b. Base Paths – 60 feet
- c. Pitching Rubber – 46 feet
- d. Home Run Fence – 200 feet
- e. Ball 9 inch standard baseball
- f. Bat max length 33 inches
- g. Bat max diameter – 2 <sup>1/4</sup> inches
- h. On Deck Batter not allowed
- i. Uniform numbers required
- j. Official little League Patch
- k. Coaches not to be in uniform, must wear team cap & club walk-out shirt or similar.
- l. Metal cleats not allowed
- m. Balks not called
- n. Infield Fly applies
- o. Full roster batting permitted, if so, resting pitchers may be included. For clarity, this means that any pitcher under a mandatory rest period from playing in the field is still be allowed to bat if included on the line-up.
- p. Pinch Runners not permitted (BNSW Only, rule 7.14 shall apply at Nationals)
- q. Designated Hitters not permitted
- r. Leads, No.
- s. Stealing, when the ball first crosses the plate – ref rule 7.13 for detail
- t. Dropped 3<sup>rd</sup> Strike, the batter is out and the ball remains alive.

# Little League NSW State Championship Rules & Procedures 2008

## 6.7. PITCHING RULES

These rules replace the regular season pitching regulations. ***Violation of these pitching rules is subject to protest and forfeiture by decree of the Tournament Committee in Williamsport if protested before the umpire(s) leave the playing field.***

- a. Any player on a tournament team may pitch.
- b. There is no limit to the number of pitchers a tournament team may use in a game.
- c. A tournament pitcher may not pitch in regular season or Special Games while the team is still participating in the tournament.
- d. Pitchers once removed from the mound may not return as pitchers in that game.
- e. Every 5 pitches shall be equal to one Defensive Out. This clause is an initiative to remove a pitcher before commencing a Substantial Assignment where less than 3 outs have been achieved. (n/a beyond State Championships).

## 6.8. PITCHING RESTRICTIONS

- a. Pitching & catching restrictions below do not preclude a coach's responsibility to utilise common sense and a duty of care in protecting players from an overuse situation, especially early in the season. Inappropriate use of players may result in the withdrawal of a coach's accreditation.
- b. Players shall have their pitching activity described in terms of "Assignments". Such pitching activity will include activity in other competitions, other tournaments, in training, and otherwise. Such Assignments are described in terms of the number of pitches involved as follows:

Type	10 year olds @ 30/4/08	L/League	Battery Rest Period
MINOR	1 -19	1 - 29	nil
SUBSTANTIAL	20 - 39	30 - 49	2 days
MAJOR	40 - 50	50 -60	3 days
Tournament Max	60	70	3 days

***The variation to the rules used in the Sydney Junior Championships should be noted;*** particularly the revised numbers relative to each Assignment and the inclusion of a Tournament limit.

# Little League NSW State Championship Rules & Procedures 2008

The following table may assist in calculating when a Little League player may next be available to take the field or the mound.

First Assignment (Day 1)					
G1	G2	Agg	Field	Rest Days	Next Pitch
Minor	No assignment	29	Yes	0	D2
Minor	Minor	<30	Yes	0	D2
		30 - 60	1B or 2B only *	2	D4
Sub	No	49	1B or 2B only *	2	D4
Major	No	60	D3	3	D5

\* *Having not pitched the previous day at all.*

- a. A pitcher is deemed to have completed his assignment:-
  - (i) Once the Umpire has been advised by a Team of a field change which relieves the pitcher, or
  - (ii) Upon completion of the game, or
  - (iii) In the event an unannounced substitution removes him from the mound.
- b. A pitcher will be permitted to complete pitching to the batter in the box, should their limit be reached with that batter, ONLY in the case where the pitcher is in the process of completing a Major Assignment.
- c. Relief pitchers may start an innings or come from the bench (n/a beyond State Championships)
- d. No pitcher may undertake more than one pitching assignment per game.
- e. No player is allowed to pitch and catch in the same day EXCEPT as provided at Rule 6.11(e).
- f. There is no limit on the number of innings that can be pitched.
- g. No pitcher can pitch in consecutive games if having pitched more than 29 pitches in the previous game.
- h. Intentional Walk – Before a pitch is delivered to the batter, the catcher must inform the umpire-in-chief that the defensive team wishes to give the batter an intentional base on balls. The umpire-in-chief waves the batter to first base. The ball is dead.

# Little League NSW State Championship Rules & Procedures 2008

---

## 6.9. REST PERIODS

References herein to a number of day's "rest" are intended to mean rest periods expressed in calendar days, not blocks of 24 hours. For clarity, this means, by way of example:- A player who finishes pitching at 10am on Saturday, and requires "one day's rest", may legally pitch again only on Monday {at any time}, and not at 10:01am on Sunday. The "one day" of rest is deemed to be all of Sunday.

## 6.10. PITCHING RESTRICTIONS – SPECIFIC

- a. Bull pens must be limited to 20 pitches
- b. No player may pitch a SUBSTANTIAL Assignment on the **same day** that he pitches a MINOR Assignment.
- c. No player may pitch a MAJOR Assignment on the **same or next day** after pitching a MINOR Assignment.
- d. Should a pitcher complete **a second MINOR assignment on the same day as the first**, where the aggregate of all pitches thrown is **less than 30 pitches**, both assignments can be aggregated and considered a Single Minor.
- e. Once a pitcher completes a single MINOR assignment, that player:-
  - I. Requires no rest before again pitching or playing in future games:-
  - II. May take any non-battery field position in the game after being relieved:-
  - III. May pitch again that day but only in a second MINOR assignment:-
  - IV. May, **on the next day**, pitch a MINOR or SUBSTANTIAL assignment.
- f. Once a pitcher completes a **second MINOR** assignment on the **same day** as the first, where the aggregate of all pitches thrown is equal to or greater than 30 Pitches (i.e. equal to a Substantial), then that player can remain in the game either at 1<sup>st</sup> or 2<sup>nd</sup> base but after the second pitching assignment of the day requires **two day's rest before again playing in the battery**.
- g. Once a pitcher completes a SUBSTANTIAL assignment, having not pitched at all the day before, that player:-
  - I. Requires two day's rest before again playing in a battery position:
  - II. After being relieved, can remain in the game at 1<sup>st</sup> or 2<sup>nd</sup> base only:
- h. Once a pitcher completes a SUBSTANTIAL assignment, having pitched a MINOR assignment the day before, that player:-
  - I. Requires three day's rest before again playing in a battery position:
  - II. After being relieved, shall be removed from the game:
  - III. Cannot take a fielding position in subsequent games on that day.

# Little League NSW State Championship Rules & Procedures 2008

---

- i. Once a pitcher completes a MAJOR assignment, that player:-
  - i. Is entitled to finish pitching to the batter in the box at the point that his Major Assignment pitch count is reached:
  - ii. Requires three day's rest before again playing in a battery position:
  - iii. After being relieved, shall be removed from the game:
  - iv. Cannot take a fielding position in subsequent games on that day or the following day.

## 6.11. CATCHING RESTRICTIONS

- a. Players may catch for no more than 27 Defensive Outs per day.
- b. This restriction deals only with actual playing time, and the limit will not include Defensive Outs granted by any administrative process.
- c. If the 27<sup>th</sup> Defensive Out is recorded as part of a play that includes multiple outs, no offence will have been committed.
- d. The defensive Team Scorer is permitted to directly advise the Head Coach if s/he believes a player is in danger of breaching this Clause.
- e. A catcher is allowed to pitch on the same day but is restricted to a Minor Assignment.

## 6.12. CONTINUOUS BATTING LINEUP

- a. A team may elect to bat a roster from 9 to 14 players
- b. Once elected, the roster size may not change during that game (i.e.:- from, say, 12 to 14), except for (c) below
- c. In the event of injury or illness (see 6.15) causing withdrawal of a batter from the line-up, each subsequent batter shall move up to close the order
- d. No automatic outs apply.

## 6.13. BENCH/DUGOUT

No one except the players, manager and coach(s) shall occupy the bench or dugout during a game. Base coaches must be adults, or having obtained Level 1 Coach Accreditation.

# Little League NSW State Championship Rules & Procedures 2008

---

## 6.14. VISITS

- a. A manager or coach may not leave a dugout for any reason during a game without receiving permission from an umpire. The manager or coach may be removed from the field for the remainder of the game for violation of this rule. When permission is granted the manager or coach will be permitted to go to the mound to confer with the pitcher or any defensive player(s). A manager or coach who is granted a time out to talk to any defensive player will be charged with a visit to the pitcher.
- b. A manager or coach may come out **twice in one inning** to visit with the pitcher, but the third time out, the player must be removed as a pitcher. The manager or coach may come out **three times in a game** to visit with the pitcher, but the fourth time out, the player must be removed as a pitcher. The rule applies to each pitcher who enters a game.
- c. Only one offensive time-out will be permitted each inning.

## 6.15. INJURY/ILLNESS

If a player is injured or becomes ill during a game, the decision of a doctor (if present) or medical personnel will be final as to whether or not the player may continue in the game.

## 6.16. MANDATORY PLAY

- a. Every player on a team roster shall participate in each game for a minimum of three (3) consecutive defensive outs and bat at least one (1) time.
- b. Managers are responsible for fulfilling the mandatory play requirements.
- c. There is no exception to this rule unless the game is shortened for any reason.
- d. A game is not considered shortened if the home team does not complete the offensive half of the sixth or seventh inning (or any extra inning) due to winning the game.
- e. For the purposes of this rule,
  - I. "three (3) consecutive defensive outs" is defined as: A player enters the field in one of the nine defensive positions when his/her team is on defence and occupies such position while three consecutive outs are made;
  - II. Every 5 pitches shall be equal to one Defensive Out. That is a Minor Assignment or part thereof shall constitute 3 defensive outs, irrespective of outs being achieved;
  - III. "bat at least one (1) time" is defined as: A player enters the batter's box with no count and completes that time at bat by being put out or by reaching base safely, or having been retired hurt due to injury or illness. Should an injured player recover and re-enter the game, mandatory participation requirement re-apply.

# Little League NSW State Championship Rules & Procedures 2008

---

- IV. Pitchers having been removed from the mound must have achieved one At Bat prior to any replacement pitcher assuming a position in the Batting Order.
- f. Failure to meet the mandatory play requirements in this rule is a basis for protest. If one or more players on a roster do not meet this requirement, and if protested before the umpires leave the playing field, it shall result (by action of the Tournament Committee) in the suspension of the team's manager for the next two scheduled tournament games, even if those games are played at the next tournament level. Additional penalties (up to and including forfeiture of a game and/or disqualification of the team, managers or coaches from further tournament participation) may be imposed if, in the opinion of the Tournament Committee:
  - i. a manager or coach takes any action that results in making a travesty of the game, causing players to intentionally perform poorly for the purpose of extending or shortening a game, or;
  - ii. a team fails to meet the requirements of this rule more than once during the International Tournament, which begins with District play and ends at the World Series level.
  - iii. a manager wilfully and knowingly disregards the requirements of this rule.
  - iv. A manager or coach suspended for any reason is not permitted to be at the game site and must not take any part in the game, nor have any communications whatsoever with any persons at the game site. Violation may result, by action of the Tournament Committee, in further suspension, forfeiture of a game and/or disqualification of the team, managers or coaches from further tournament participation.

## 6.17. SUBSTITUTION/RE-ENTRY

- a. This tournament rule replaces regular season Rule 3.03 (re-entry) for all levels of tournament play.
- b. If illness, injury or the ejection of a player prevents a team from fielding nine (9) players, a player previously used in the line-up may be inserted, but only if there are no other eligible substitutes available.
- c. The opposing team manager shall select the player to re-enter the line-up.
- d. A player ejected from the game is not eligible for re-entry.
- e. Any player who has been removed for a substitute may re-enter the game in the SAME position in the batting order.
- f. A substitute entering the game for the first time may not be removed prior to completion of her/his mandatory play requirements.

**NOTE 1: A player who has met the mandatory play requirements, and is a pitcher at the time she/he is removed, may be removed for a substitute batter and re-enter the game as a pitcher once, provided the pitcher was not physically replaced on the mound.**

# Little League NSW State Championship Rules & Procedures 2008

---

- g. Defensive substitutions must be made at the time the team takes the field defensively, excepting Pitching rotations which can come from the bench - see also 6.8(c).
- h. Offensive substitutions must be made at the time the offensive player has her/his turn at bat.
- i. A starter and her/his substitute must not be in the line-up at the same time, except as provided in Rule 6.17 (b) above or 6.12.
- j. Improper substitution is a basis for protest. Protests involving improper substitution not resolved before the next pitch or play shall not be considered.
- k. Rule 7.14, Special Pinch Runner, **will NOT apply** during NSW tournament play.

## 6.18. SUSPENDED GAMES

Any game in which a winner cannot be determined in accordance with the playing rules shall be resumed from the exact point at which it was suspended regardless of the number of innings played.

EXCEPTION: In the event that the first inning is not completed, the game shall be replayed from the beginning and all records, including pitching, disregarded. Incomplete (not regulation) or tie games are considered suspended games.

## 6.19. 10-RUN RULE

If at the end of a regulation game one team has a lead of ten (10) runs or more the manager of the team with the least runs shall concede the victory to the opponent.

**NOTE: If the visiting team has a lead of ten (10) or more runs, the home team must bat in their half of the inning.**

## 6.20. REGULATION GAME

Each tournament game must be played to the point of being an official game:

- a. Regulation games are of four or more innings in which one team has scored more runs than the other (three and one-half (3 1/2) if the home team is ahead).
- b. Regulation games (when a winner can be determined) terminated because of weather, darkness or curfew must NOT be resumed. This does not mean games suspended or delayed by weather that may still be resumed before darkness or curfew on the same day.
- c. If two games are scheduled for the same site, no "time limit" may be imposed on the first game.

# Little League NSW State Championship Rules & Procedures 2008

---

## 6.21. REPLAYING GAMES

No tournament game may be replayed without specific approval from the Tournament Committee.

## 6.22. UNAUTHORISED AGREEMENTS

No agreements shall be made between managers and/or Tournament Directors and/or umpires contrary to Tournament Rules without the express permission of the District Administrator.

## 6.23. ALTERCATIONS

Any player, manager, coach or official who is involved in a physical or verbal altercation at the game site could be suspended or removed from tournament play by the Tournament Committee and cited to appear before the Baseball NSW Tribunal.

**Note: Prescribed Penalties shall apply as posted at <http://www.nsw.baseball.com.au>**

## 6.24. EJECTIONS

Any manager, coach or player ejected from a game will be suspended for the next physically played game (See Rule 4.07). Ejections shall be noted in the tournament team's affidavit in the Record of Ejections on page 4. Entry should include member's name and date ejected and be signed by the Tournament Director or District Administrator.

## Little League NSW State Championship Rules & Procedures 2008

---

### 6.25. Games tied after 6 innings ...

- (m) No game shall continue for a result beyond the bottom of the 6th innings unless it be with the use of a batting tee and after the following procedure is exhausted
- (n) Tied games shall be firstly decided on:-
  - (i) Most on Base, if tied then;
  - (ii) Most Hits, and if still tied;
  - (iii) Least Walks; and fourthly
  - (iv) Bring out the tee and proceed to the 7th and subsequent innings until a result is achieved after even innings ...
- (o) Each batter shall execute a single swing off the tee
- (p) The batter shall be declared out should the ball not advance beyond an imaginary arc from the 1st & 3rd base foul lines, dissecting the pitchers rubber
- (q) The batter shall advance only to 1st base
- (r) Runners, however, are unrestricted and can advance at the risk of being put out.

# Little League NSW State Championship Rules & Procedures 2008

---

## 7. SCORERS

Each Tournament Team shall provide a scorer for each game.

The official scorer shall, immediately following each game, complete all details on the Official Result Sheet attached as Schedule 4.

1. Date of game.
2. Name of each player who pitched.
3. Number of pitches.
4. Name of opponents.
5. Score of game.
6. Defensive Outs for every player
7. At Bats for every player
8. Signature of Team Managers and Umpire-in Chief.

This record shall be accepted as official and presented to the Tournament Director as soon as practical following the conclusion of each game, but in any event, prior to the commencement of any subsequent game involving either team.

## 8. TOURNAMENT DIRECTOR

The Tournament Director shall report as follows:

- a. Advise each participating league of schedule and time and site of games.
- b. Mail completed schedule to the Regional Director showing winners at each level of play.

## 9. TROPHIES

Tournament Director may award an appropriate pennant and pins to participating Teams and players. Trophies, home run balls or other types of awards to players are not authorised and may not be presented.

## 10. FINANCIAL RESPONSIBILITY

Each league shall assume full responsibility for expenses incurred in NSW State Championship tournament competitions and attendance at the Australian National Championships, Redlands Baseball Complex, Queensland, 5-8 June, 2008. The cost of the latter tournament is estimated at \$550 per player. The cost for teams participating in the following events shall be met by the ABF and/or Little league Organisation.

- Asia/Pacific Qualifier July 8 - 14
- World Series USA Aug 15 - 24

# Little League NSW State Championship Rules & Procedures 2008

---

## 11. FACILITY CONDITIONS & REQUIREMENTS

### 11.1. Facilities

It is essential that the best possible playing conditions be provided at every level of the tournament. The following conditions are recommended for tournament games:

- a. Grass infield and outfield.
- b. Outfield fences for the Little League Division must be a maximum of 225 feet from home plate and a minimum of 195 feet.
- c. Outfield fences of safe-type construction, a minimum of 4 feet in height, maximum of 6 feet.
- d. Batter's eye 24 feet wide minimum at centre field.
- e. Backstop not less than 20 feet from home plate.
- f. Back drop of 6 to 8 feet of canvas in back of home plate if no press box is in that position.
- g. Two foul poles at least 6 feet above the top of the fence.
- h. A protective screen in front of dugouts.
- i. Lights, if used, must meet minimum Little League standards.
- j. Only conventional dirt pitching mounds are approved for tournament play.
- k. Grass cut to proper height. No holes or other unsafe conditions.
- l. Infield dragged and in playable condition.
- m. Markings according to regulations.
- n. Bases must be regulation size and properly secured.
- o. Public address system and announcer.
- p. Scoreboard and operator(s).
- q. Adequate seating
- r. Adequate parking
- s. Local police departments should be advised of the event and requested to cooperate with league personnel.
- t. First aid, medical and ambulance services available.
- u. Rest rooms.
- v. Baseballs (if not otherwise provided by Tournament Director).
- w. Adult volunteer insurance should be provided by each league involved.
- x. Host leagues may retain concession income

# Little League NSW State Championship Rules & Procedures 2008

---

## 12. SAFETY CODES & BEHAVIOUR

- a. Responsibility for safety procedures should be that of an adult member of the local league.
- b. Arrangements should be made in advance of all games and practices for emergency medical services.
- c. Managers, coaches and umpires should have some training in first-aid. First-Aid Kit should be available at the field.
- d. No games or practice should be held when weather or field conditions are not good, particularly when lighting is inadequate.
- e. Play area should be inspected frequently for holes, damage, glass and other foreign objects.
- f. Dugouts and bat racks should be positioned behind screens.
- g. Only players, managers, coaches and umpires are permitted on the playing field during play and practice sessions.
- h. Responsibility for keeping bats and loose equipment off the field of play should be that of a regular player assigned for this purpose.
- i. The batting Team shall be responsible for retrieving foul balls batted out of the playing area.
- j. During practice sessions and games, all players should be alert and watching the batter on each pitch.
- k. During warm up drills, players should be spaced so that no one is endangered by errant balls.
- l. Equipment should be inspected regularly. Make sure it fits properly.
- m. Pitching machines, if used, must be in good working order (including extension cords, outlets, etc.) and must be operated only by adult managers and coaches.
- n. Batters must wear protective helmets during practice, as well as during games.
- o. Catchers must wear catcher's helmet chest protector and shin guards.
- p. Male catchers must wear and protective supporter and cup at all times.
- q. Except when runner is returning to a base, head first slides are not permitted.
- r. During sliding practice bases should not be strapped down.
- s. At no time should "horse play" be permitted on the playing field.
- t. Parents of players who wear glasses should be encouraged to provide "Safety Glasses.
- u. Players must not wear watches, rings, pins, jewellery or other metallic items.
- v. Catchers must wear catcher's helmet, face mask and throat guard in warming up pitchers. This applies between innings and in bull pen practice. Skull caps are not permitted.
- w. Batting/catcher's helmets should not be painted unless approved by the manufacturer.
- x. Regulations prohibit on-deck batters. This means no player should handle a bat, even while in an enclosure, until it is his/her time at bat
- y. Players who are ejected, ill or injured should remain under supervision until released to the parent or guardian.

# Little League NSW State Championship Rules & Procedures 2008

---

## Schedule 1 - Penalties

- Penalty for not providing umpires ..... \$400 per day or part thereof

## Schedule 2 – Tournament Team Eligibility Affidavit

## Schedule 3 – Tournament Draw

## Schedule 4 – Official Result Sheet